

Slugs, Slides & Shackles

Selection, Installation and Positioning

Most mainsails are finished with a 5/16-inch boltrope slid into a slot along the aft edge of the spar. Install in a cloth sleeve sewn to the edge of the sail or sew directly to a cloth tape and fold back, sandwiching the sail and leaving the rope exposed. A sleeve provides very good aerodynamic performance because the leading edge of the sail is sealed to the spar along its length.

However, there are several disadvantages. When the sail is lowered, the luff comes out of the track and can flog and fly with the wind. Also, there will be some wear along the rope or its tape sleeve as it runs up and down the slot.

SLUGS/SLIDES: Small nylon barrels or flat "T" shapes that are secured ahead of the boltrope and inserted in the slot instead of the rope. Keeps the sail stacked in the slot when a stop is used and sail is lowered. Slug diameters may vary from 5/16-1/2 inch. Diameter is not typically very critical but experimentation may indicate that one size works more smoothly than another. Flat slides range from 5/8-7/8 inch wide.

EXTERNAL SLIDES: Used on track, common in the days of wooden masts where slots were not easy to create and did not always have good strength. Slide measurements provided are for the track it goes on. Slides are actually about 1/8 inch wider than the track.

SHACKLES: Used to secure the sail to slides or slugs. Installation is very quick and can sometimes eliminate the need for a spur grommet in the sail edge.

HOOPS: Used primarily to secure lateen sails to their spars. Spars can be no more than 1-1/2 inches in diameter. Hoops are snapped in place with a grommet.

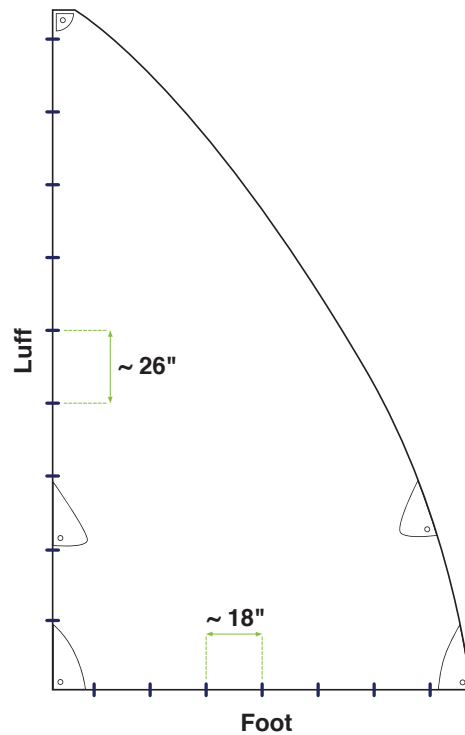
SLEEVES: Used on very small boats. Aerodynamically excellent, but sails cannot be lowered easily. Sleeve luffed sails can be used only on unstayed masts unless a slot in the sleeve is provided and the stays are disconnected each time the sail is removed.

INSTALLING SLUGS & SLIDES

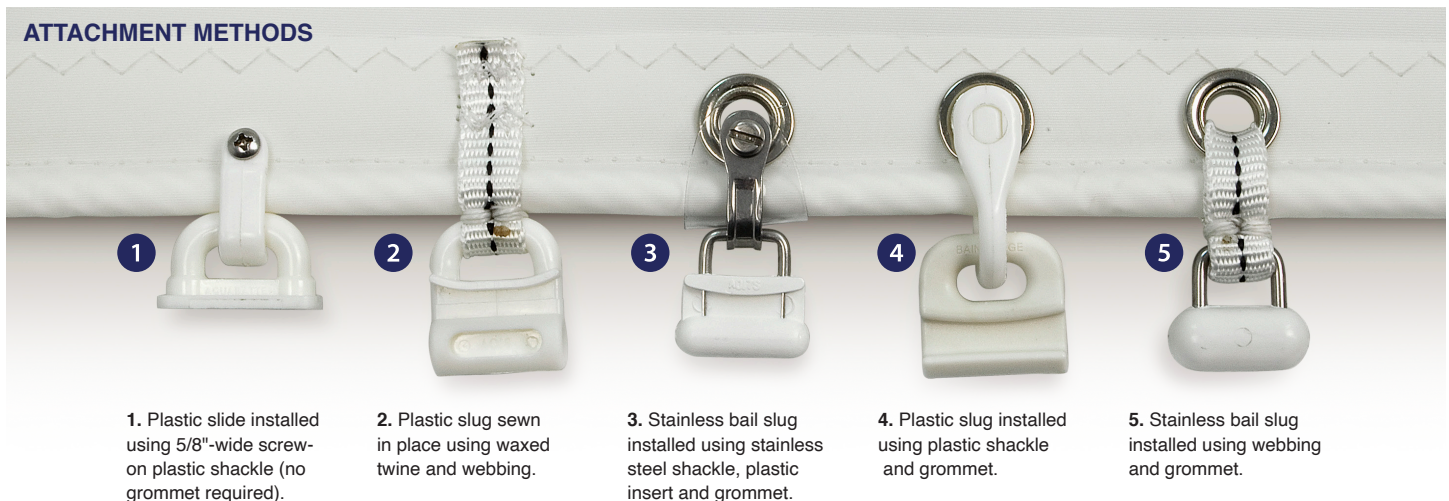
There are several different attachment methods to consider when installing slugs and slides. The strongest and most common attachment method is with a shackle and grommet. Webbing is more labor intensive but allows for greater articulation of the slug position.

LUFF: Position the top slug right below the headboard or in the headboard slots designed for slug attachment with webbing. Work down along the luff installing slugs approximately every 26 inches. Avoid placing a slug too close to a reef grommet; rather, position the slug at least as high above the grommet as the distance from the slug stop to the tack hook at the gooseneck. The bottom slug should, at the very least, be high enough to sit above the slug stop when the sail is raised.

FOOT: Position slugs or slides equally spaced about 18 inches apart along the foot of the sail.



ATTACHMENT METHODS



SAIL HARDWARE COMPATIBILITY CHART

Each slug and slide was tested on a sail with 5/16-inch boltrope and a #2 spur grommet (#24105 without grommet) installed just behind the boltrope. Use this chart to determine which slugs and slides are compatible with each shackle. All slugs and slides can also be webbed in place without the use of shackles.

	SHACKLES								
	Screw-on Stainless Steel 3/4" x 1/2" #100043	Screw-on Stainless Steel Heavy Duty 3/4" x 3/8" #100049	Screw-on Stainless Steel Heavy Duty 1-1/16" x 3/8" #100047	Snap-in Plastic 7/8" #727100	Snap-in Plastic 1-1/8" #728100	Screw-on Plastic 5/8" #24105	Screw-on Plastic 15/16" #24106	Screw-on Plastic 1-1/8" #103037	Screw-on Plastic Heavy Duty 1-1/8" #137200
SLUGS									
Stainless Steel Welded 5/16" #1390	✓	✓	✓	✓	✓				✓
Allslip Nylon Round 5/16" #1138			✓						
Allslip Nylon Round 3/8" #6981			✓						
Allslip Nylon Round 1/2" #1140			✓						
Nylon Round 5/16" #23307			✓	✓	✓	✓	✓	✓	✓
Nylon Round 3/8" #23319			✓	✓	✓	✓	✓	✓	✓
Nylon Round 1/2" #23308			✓	✓	✓	✓	✓	✓	✓
Bail SS With Rocker 5/16" #23312	✓	✓	✓		✓	✓	✓	✓	
Bail SS Without Rocker 3/8" #67311	✓	✓	✓	✓	✓	✓	✓	✓	✓
Bail SS With Rocker 13/32" #23313	✓	✓	✓	✓	✓	✓	✓	✓	✓
Bail SS With Rocker 7/16" #23314	✓	✓	✓	✓	✓	✓	✓	✓	✓
Bail SS Without Rocker 1/2" #67511	✓	✓	✓	✓	✓	✓	✓	✓	
SLIDES									
Selden Mast Plastic 7/16" #103038			✓	✓			✓	✓	
Selden Mast Plastic 9/16" #103039			✓	✓	✓		✓	✓	
Selden Mast Plastic 5/8" #103040			✓					✓	✓
Allslip Slide 5/8" #1131			✓						
Allslip Slide 3/4" #1132			✓						
Allslip Slide 7/8" #1137			✓						
Nylon Internal Flat 5/8" #23309			✓	✓	✓	✓	✓	✓	
Nylon Internal Flat 3/4" #23310			✓	✓	✓	✓	✓	✓	✓
Nylon Internal Flat 7/8" #23311			✓		✓			✓	✓
Stainless Flat Internal Track 5/8" #1379			✓	✓	✓		✓		✓
Stainless Flat Internal Track 3/4" #1900			✓	✓	✓		✓		✓
Stainless Flat Internal Track 7/8" #1380			✓	✓	✓		✓		✓
Stainless Steel External 5/8" #23301	✓	✓	✓				✓		
Stainless Steel External 7/8" #23303	✓	✓	✓			✓	✓		